



Flüssiggas-Anlagen

»Group 11«

Connection Parts in Special Materials

**Turned and Fabricated Parts in Brass,
Steel and Stainless Steel to
Customer Specifications**



Flüssiggas-Anlagen GmbH • Peiner Straße 217 • D - 38229 Salzgitter (Germany)
Tel. +49 (0) 53 41 / 86 97-0 • Fax +49 (0) 53 41 / 86 97-11
E-Mail: info@fas-uni.de • <http://www.fas-uni.de>



»11« **Connecting Parts in Special Materials**
Turned and Fabricated Parts in Brass, Steel
and Stainless Steel to Customer Specifications

Adapter PN 40, Type FAS, steel St 52, galvanized, with inspection certificate 3.1.B to EN 10 204

Type: **A** = with ACME-male thread and NPT-male thread
 Type: **B** = with ACME-male thread and NPT-female thread

Order No.	Order No.	A	B	Weight
Type A	Type B	ACME	NPT	(kg)
11 003	11 022	1 ³ / ₄ "	3 ³ / ₄ "	0,25
11 005	11 024	1 ³ / ₄ "	1"	0,28
11 007	11 033	1 ³ / ₄ "	1 ¹ / ₄ "	0,26
11 009	11 026	2 ¹ / ₄ "	1 ¹ / ₄ "	0,54
11 012	11 034	2 ¹ / ₄ "	2"	0,54
11 013	11 029	3 ¹ / ₄ "	2"	1,27
11 016	11 035	3 ¹ / ₄ "	3"	2,60



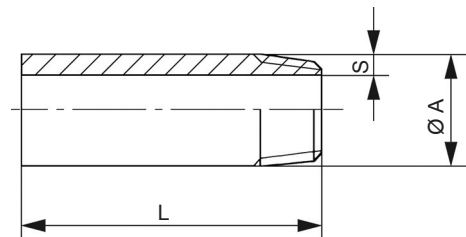
Type A



Type B

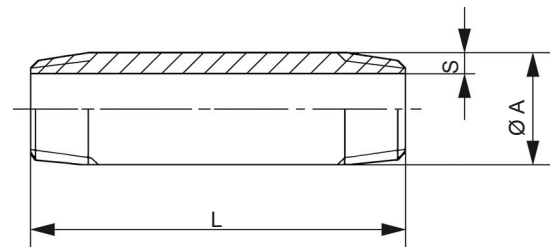
Nipple PN 40, with NPT-male thread, steel St 35.8 III, with inspection certificate 3.1.B to EN 10 204

Order No.	NPT	A	S	L	Weight
11 101	1 ¹ / ₄ "	13,7	3,0	100	0,08
11 102	3 ³ / ₈ "	17,1	3,2	100	0,10
11 103	1 ¹ / ₂ "	21,3	3,7	100	0,15
11 104	3 ³ / ₄ "	26,7	3,9	100	0,20
11 105	1"	33,4	4,5	100	0,30
11 106	1 ¹ / ₄ "	42,2	4,9	100	0,40
11 107	1 ¹ / ₂ "	48,3	5,1	100	0,50
11 108	2"	60,3	5,5	100	0,68
11 109	2 ¹ / ₂ "	73,0	7,0	100	0,75
11 110	3"	88,9	7,6	100	1,40



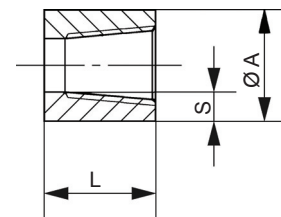
Double Nipple PN 40, both sides with NPT-male thread, steel St 35.8 III, with inspection certificate 3.1.B to EN 10 204

Order No.	NPT	A	S	L	Weight
11 115	1 ¹ / ₄ "	13,7	3,0	100	0,02
11 116	3 ³ / ₈ "	17,1	3,2	100	0,10
11 117	1 ¹ / ₂ "	21,3	3,7	100	0,12
11 118	3 ³ / ₄ "	26,7	3,9	100	0,20
11 119	1"	33,4	4,5	100	0,30
11 120	1 ¹ / ₄ "	42,2	4,9	100	0,40
11 121	1 ¹ / ₂ "	48,3	5,1	100	0,42
11 122	2"	60,3	5,5	100	0,70
11 123	2 ¹ / ₂ "	73,0	7,0	100	1,10
11 124	3"	88,9	7,6	100	1,10



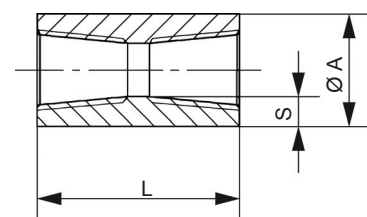
Half Coupling PN 40, with NPT-female thread, steel St 35.8 III, with inspection certificate 3.1.B to EN 10 204

Order No.	NPT	A	S	L	Weight
11 129	1 ¹ / ₄ "	19,0	4,0	17	0,01
11 130	3 ³ / ₈ "	22,2	4,0	19	0,02
11 131	1 ¹ / ₂ "	28,5	5,0	24	0,10
11 132	3 ³ / ₄ "	35,0	6,0	25	0,15
11 133	1"	44,5	8,5	30	0,20
11 134	1 ¹ / ₄ "	57,5	10,0	33	0,40
11 135	1 ¹ / ₂ "	63,5	10,5	40	0,62
11 136	2"	77,0	10,0	43	0,72
11 137	2 ¹ / ₂ "	92,0	12,5	46	0,90
11 138	3"	108,0	13,0	54	1,30



Full Coupling PN 40, both sides NPT-female thread, steel St 35.8 III, with inspection certificate 3.1.B to EN 10 204

Order No.	NPT	A	S	L	Weight
11 143	1 ¹ / ₄ "	19,0	4,0	35	0,03
11 144	3 ³ / ₈ "	22,2	4,0	38	0,05
11 145	1 ¹ / ₂ "	28,5	5,0	48	0,12
11 146	3 ³ / ₄ "	35,0	6,0	51	0,20
11 147	1"	44,5	8,0	60	0,40
11 148	1 ¹ / ₄ "	57,5	10,0	67	0,70
11 149	1 ¹ / ₂ "	63,5	11,0	79	0,95
11 150	2"	77,0	10,0	86	1,40
11 151	2 ¹ / ₂ "	92,0	12,5	92	1,90
11 152	3"	108,0	13,0	108	3,10



»11« **Connecting Parts in Special Materials**
Turned and Fabricated Parts in Brass, Steel
and Stainless Steel to Customer Specifications

Reducer PN 40, DIN 2616, material St 35.8 III, with inspection certificate 3.1.B to EN 10 204

Order No. concentric - Fig. 1	Order No. eccentric - Fig. 2	Size DN	Pipe Connection D / d	Weight (kg)
11 361	11 371	100 / 80	114,3 / 88,9	0,90
11 362	11 372	100 / 65	114,3 / 76,1	0,90
11 363	11 373	80 / 65	88,9 / 76,1	0,56
11 384	11 355	80 / 50	88,9 / 60,3	0,56
11 364	11 374	65 / 50	76,1 / 60,3	0,47
11 382	-	65 / 40	76,1 / 48,3	0,47
11 365	11 375	50 / 40	60,3 / 48,3	0,30
11 366	11 376	50 / 32	60,3 / 42,4	0,30
11 380	-	50 / 25	60,3 / 33,7	0,30
11 367	11 377	40 / 32	48,3 / 42,4	0,18
11 383	-	40 / 25	48,3 / 33,7	0,18
11 385	-	40 / 20	48,3 / 26,9	0,18
11 368	11 378	32 / 25	42,4 / 33,7	0,12
11 387	-	32 / 20	42,4 / 26,9	0,12
11 369	11 379	25 / 20	33,7 / 26,9	0,10
11 350	-	20 / 15	26,9 / 21,3	0,05

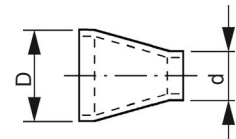


Fig. 1 - concentric

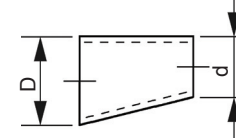
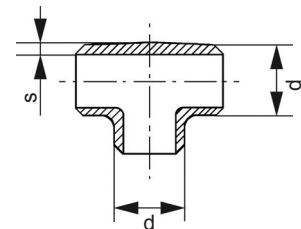


Fig. 2 - eccentric

Other sizes and materials are available on request.

Tee PN 25, DIN 2615, material St 35.8 III, with inspection certificate 3.1.B to EN 10 204

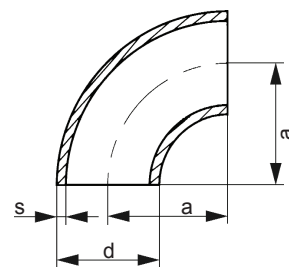
Order No.	Size DN	Pipe Connection d	Wall Thickness s	Weight (kg)
11 401	10	17,2	2,0	0,07
11 402	15	21,3	2,0	0,09
11 391	20	26,9	2,3	0,15
11 392	25	33,7	2,6	0,29
11 393	32	42,4	2,6	0,49
11 394	40	48,3	2,6	0,69
11 395	50	60,3	2,9	0,99
11 396	65	76,1	2,9	1,68
11 397	80	88,9	3,2	2,33
11 398	100	114,3	3,6	4,00



Other sizes and materials are available on request.

Pipe Bend PN 40, DIN 2605, with 90° bend, steel St 35.8 III, with inspection certificate 3.1.B to EN 10 204

Order No.	Size DN	Pipe Connection d	Wall Thickness s	Radius a	Weight (kg)
11 409	10	17,2	1,8	25	0,03
11 410	15	21,3	2,0	28	0,04
11 411	20	26,9	2,3	29	0,06
11 412	25	33,7	2,6	38	0,12
11 413	32	42,4	2,6	48	0,19
11 414	40	48,3	2,6	57	0,26
11 415	50	60,3	2,9	76	0,49
11 416	65	76,1	2,9	90	0,78
11 417	80	88,9	3,2	115	1,22
11 418	100	114,3	3,6	153	2,35

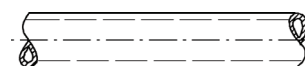


Other sizes and materials are available on request.

Seamless Steel Pipe PN 40, to DIN 2448, material St 35.8 III, to DIN 17175
with inspection certificate 3.1.B to EN 10 204

Type: **A** = bare
 Type: **B** = with plastic coating to DIN 30670/N, for underground installation

Order No. Type A	Order No. Type B	Size DN	Dimensions
11 591	11 601	15	21,3 x 2,0 mm
11 592	11 602	20	26,9 x 2,3 mm
11 593	11 603	25	33,7 x 2,6 mm
11 594	11 604	32	42,4 x 2,6 mm
11 595	11 605	40	48,3 x 2,6 mm
11 596	11 606	50	60,3 x 2,9 mm
11 597	11 607	65	76,1 x 2,9 mm
11 598	11 608	80	88,9 x 3,2 mm
11 599	11 609	100	114,3 x 3,6 mm



Other sizes and materials are available on request.

»11« **Connecting Parts in Special Materials**
Turned and Fabricated Parts in Brass, Steel
and Stainless Steel to Customer Specifications

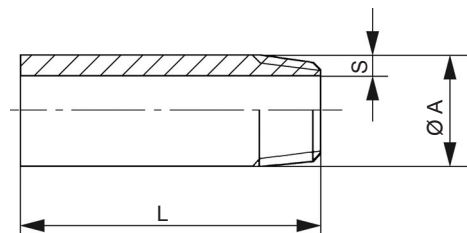
Spiral-Wound Gasket PN 40, LPG gas resistant, spiral of stainless steel 1.4541, with graphite filler, executions are FIRE-SAFE to BS 6755 Part 2, with test report 2.2 to EN 10 204

Type: **A** = for **tongue and groove** to DIN 2512, 2,5 mm
 Type: **B** = for **male and female faces** to DIN 2513, inner ring stainless steel 1.4541, 3,2 mm
 Type: **C** = for **flanges with flat sealing surface** to DIN 2635, outside ring of steel with 3,2 mm and inner ring of stainless steel 1.4541 with 4,5 mm

Order No.	Size	Dimensions		Order No.	Size	Dimensions		Order No.	Size	Dimensions	
Type A	DN	D	d	Type B	DN	D	d	Type C	DN	D	d
11 641	15	39	29	11 699	15	39	22	11 711	15	51	24
11 642	20	50	36	11 700	20	50	28	11 712	20	61	27
11 643	25	57	43	11 701	25	57	35	11 713	25	71	34
11 644	32	65	51	11 702	32	65	43	11 714	32	82	44
11 645	40	75	61	11 703	40	75	49	11 715	40	92	51
11 646	50	87	73	11 704	50	87	61	11 716	50	107	59
11 647	65	109	95	11 705	65	109	77	11 717	65	127	73
11 648	80	120	100	11 706	80	120	90	11 718	80	142	87
11 649	100	149	129	11 707	100	149	115	11 719	100	168	114
11 650	125	175	155	11 708	125	175	141	11 720	125	194	140
11 651	150	203	183	11 709	150	203	169	11 721	150	224	168

Nipple PN 40, with R-male thread, steel St. 35.8 III to DIN 2999, with inspection certificate 3.1.B to EN 10 204 for base material

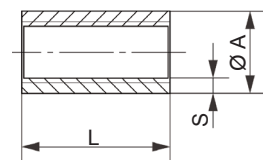
Order No.	Connection	A	S	L	Weight
11 301	1/4"	13,7	3,0	100	0,08
11 302	3/8"	17,1	3,2	100	0,10
11 303	1/2"	21,3	3,7	100	0,15
11 304	3/4"	26,7	3,9	100	0,20
11 305	1"	33,4	4,5	100	0,30
11 306	1 1/4"	42,2	4,9	100	0,40
11 307	1 1/2"	48,3	5,1	100	0,50
11 308	2"	60,3	5,5	100	0,68
11 309	2 1/2"	73,0	7,0	100	0,78
11 310	3"	88,9	8,6	100	1,40



Half Coupling PN 40, steel St 35.8 III, with inspection certificate 3.1.B to EN 10 204 for base material

Type: **A** = with **G-female** thread to DIN ISO 228
 Type: **B** = mit **Rp-female** thread to DIN 2999

Order No.	Order No.	Size	A	S	L	Weight
Type A	Type B	DN				(kg)
11 311	11 341	1/4"	19,0	4,0	17	0,01
11 312	11 342	3/8"	22,2	4,0	19	0,02
11 313	11 343	1/2"	28,5	5,0	24	0,10
11 314	11 344	3/4"	35,0	6,0	25	0,15
11 315	11 345	1"	44,5	8,5	30	0,20
11 316	11 346	1 1/4"	57,5	10,0	33	0,40
11 317	11 347	1 1/2"	63,5	10,5	40	0,62
11 318	11 348	2"	77,0	10,0	43	0,72
11 319	11 349	2 1/2"	92,0	12,5	46	0,90
11 320	11 340	3"	108,0	13,0	54	1,30



Other sizes are available on request.